

Cleaning your machine



1 Open the stainless door, wait until the piston raises. Turn off the TopBrewer using the on/off button on the front panel of the machine.



2 Remove the milk foamer by twisting the metal head anti-clockwise. Slide down the black casing. Unscrew the black foaming heads. Clean in warm water to ensure all milk deposits are removed. Dry & reattach.



3 Thoroughly wipe underneath the piston cleaning the metal filter and wipe all around cleaning the O-ring, to remove deposits of coffee. Finish with cleaning the metal filter on the bottom piston.



4 Brush around the top of the brew unit, using the long handled brush in order to remove any ground coffee deposits.



5 The stainless steel cylinder top must be completely clean with no coffee remains. Push the scraper arm back in place.



6 Place a TopBrewer cleaning tablet into the scraper. Close the stainless door.



7 Lower the TopBrewer swan neck to its lowest position and select "CLEAN" from the left pane menu. The process will take approximately 1 minute and "Machine is ready" will appear in the statusbar in the App once completed.



8 Prior to use, prime the TopBrewer by dispensing one warm milk or a milk based drink.

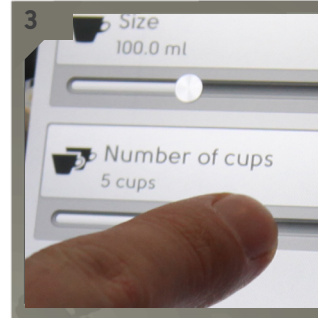
Milk cleaning



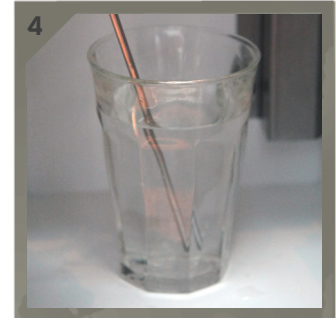
1 Add a cleaning tablet 500 ml / 17 oz warm water and let it dissolve for a couple of minutes. Place the tube or the milkspear into the glass.



2 On your iPad or Android device, select "Customize" beneath the "Warm Milk" drink icon.



3 Slide the number of cups up to 5 and select "Start now". The machine will run the cleaning liquid through the system and clean the milk foamer.



4 Fill the glass with cold clean water and place the milk spear into the glass. Repeat step 2 and 3. Once done, put the milk back and the machine is ready to use.



TIP
Remove lid from bean hopper and wipe with a damp cloth prior to filling with beans. (Fresh TopBrewer beans have a great flavour, therefore do not overfill the hoppers to allow beans to always stay their best – store unused beans in a sealed bag somewhere cool)



TIP
The machine will notify you in the status bar of the app when the dregbin containing the coffee remains is full. When removing the dregbin the unit will reset its counting system and will assume that you have emptied it. Therefore empty the dregbin once removed from the unit.

The machine is designed for coffee beans only. Please read the instructions carefully before attempting to clean the machine.

We recommend cleaning your TopBrewer daily by following the steps 6 through 9, but in some cases the frequency can be less depending on the milk type, fat content, humidity and temperature.

Once a week it is recommended to follow the complete cleaning instructions. A clean machine makes better coffee.

We only recommend using TopBrewer labelled cleaning solutions that have been proven to properly clean the machine. For further information please refer to the usermanual.